

# **RHOFADE- oxymetazoline hydrochloride cream**

## **EPI Health, LLC**

-----

### **HIGHLIGHTS OF PRESCRIBING INFORMATION**

**These highlights do not include all the information needed to use RHOFADE<sup>®</sup> topical cream safely and effectively. See full prescribing information for RHOFADE<sup>®</sup> topical cream.**

**RHOFADE<sup>®</sup> (oxymetazoline hydrochloride) cream, 1%, for topical use**

**Initial U.S. Approval: 1964**

### **INDICATIONS AND USAGE**

Rhofade cream is an alpha<sub>1A</sub> adrenoceptor agonist indicated for the topical treatment of persistent facial erythema associated with rosacea in adults. (1)

### **DOSAGE AND ADMINISTRATION**

- Not for oral, ophthalmic, or intravaginal use. (2)
- Prime pump bottle before initial use and discard product from first three pumps. (2)
- Apply a pea-sized amount once daily in a thin layer to cover the entire face (forehead, nose, each cheek, and chin) avoiding the eyes and lips. (2)
- Wash hands after application. (2)

### **DOSAGE FORMS AND STRENGTHS**

Cream, 1%. Each gram of cream contains 10 mg (1%) oxymetazoline hydrochloride, equivalent to 8.8 mg (0.88%) of oxymetazoline free base. (3)

### **CONTRAINDICATIONS**

- None. (4)

### **WARNINGS AND PRECAUTIONS**

- Alpha-adrenergic agonists as a class may impact blood pressure. Advise patients with cardiovascular disease, orthostatic hypotension, and/or uncontrolled hypertension or hypotension to seek medical care if their condition worsens. (5.1)
- Use with caution in patients with cerebral or coronary insufficiency, Raynaud's phenomenon, thromboangiitis obliterans, scleroderma, or Sjögren's syndrome and advise patients to seek medical care if signs and symptoms of potentiation of vascular insufficiency develop. (5.2)
- Advise patients to seek immediate medical care if signs and symptoms of acute narrow-angle glaucoma develop. (5.3)

### **ADVERSE REACTIONS**

Most common adverse reactions (incidence  $\geq$  1%) are application site dermatitis, worsening inflammatory lesions of rosacea, application site pruritis, application site erythema, and application site pain. (6.1)

**To report SUSPECTED ADVERSE REACTIONS, contact EPI Health, LLC at 1-800-499-4468 or FDA at 1-800-FDA-1088 or [www.fda.gov/medwatch](http://www.fda.gov/medwatch).**

**See 17 for PATIENT COUNSELING INFORMATION and FDA-approved patient labeling.**

**Revised: 11/2019**

---

## **FULL PRESCRIBING INFORMATION: CONTENTS\***

### **1 INDICATIONS AND USAGE**

### **2 DOSAGE AND ADMINISTRATION**

### **3 DOSAGE FORMS AND STRENGTHS**

### **4 CONTRAINDICATIONS**

### **5 WARNINGS AND PRECAUTIONS**

5.1 Potential Impacts on Cardiovascular Disease

5.2 Potentiation of Vascular Insufficiency

5.3 Risk of Angle Closure Glaucoma

## **6 ADVERSE REACTIONS**

6.1 Clinical Studies Experience

## **7 DRUG INTERACTIONS**

7.1 Anti-hypertensives/Cardiac Glycosides

7.2 Monoamine Oxidase Inhibitors

## **8 USE IN SPECIFIC POPULATIONS**

8.1 Pregnancy

8.2 Lactation

8.4 Pediatric Use

8.5 Geriatric Use

## **10 OVERDOSAGE**

## **11 DESCRIPTION**

## **12 CLINICAL PHARMACOLOGY**

12.1 Mechanism of Action

12.2 Pharmacodynamics

12.3 Pharmacokinetics

## **13 NONCLINICAL TOXICOLOGY**

13.1 Carcinogenesis, Mutagenesis, Impairment of Fertility

## **14 CLINICAL STUDIES**

## **16 HOW SUPPLIED/STORAGE AND HANDLING**

## **17 PATIENT COUNSELING INFORMATION**

\* Sections or subsections omitted from the full prescribing information are not listed.

---

## **FULL PRESCRIBING INFORMATION**

### **1 INDICATIONS AND USAGE**

RHOFADE<sup>®</sup> (oxymetazoline hydrochloride) cream, 1% is indicated for the topical treatment of persistent facial erythema associated with rosacea in adults.

### **2 DOSAGE AND ADMINISTRATION**

For topical use only. RHOFADE cream is not for oral, ophthalmic, or intravaginal use.

Prime the RHOFADE cream pump before using for the first time. To do so, with the pump in the upright position, repeatedly depress the actuator until cream is dispensed and then pump three times. Discard the cream from priming actuations. It is only necessary to prime the pump before the first dose.

RHOFADE cream tubes do not require priming.

Apply a pea-sized amount of RHOFADE cream, once daily in a thin layer to cover the entire face (forehead, nose, each cheek, and chin) avoiding the eyes and lips. Wash hands immediately after applying RHOFADE cream.

### **3 DOSAGE FORMS AND STRENGTHS**

RHOFADE<sup>®</sup> (oxymetazoline hydrochloride) cream, 1% is a white to off-white cream. Each gram of cream contains 10 mg (1%) oxymetazoline hydrochloride, equivalent to 8.8 mg (0.88%) of oxymetazoline free base.

### **4 CONTRAINDICATIONS**

None.

### **5 WARNINGS AND PRECAUTIONS**

#### **5.1 Potential Impacts on Cardiovascular Disease**

Alpha-adrenergic agonists may impact blood pressure. RHOFADE cream should be used with caution in patients with severe or unstable or uncontrolled cardiovascular disease, orthostatic hypotension, and uncontrolled hypertension or hypotension. Advise patients with cardiovascular disease, orthostatic hypotension, and/or uncontrolled hypertension/hypotension to seek immediate medical care if their condition worsens.

#### **5.2 Potentiation of Vascular Insufficiency**

RHOFADE cream should be used with caution in patients with cerebral or coronary insufficiency, Raynaud's phenomenon, thromboangiitis obliterans, scleroderma, or Sjögren's syndrome. Advise patients to seek immediate medical care if signs and symptoms of potentiation of vascular insufficiency develop.

#### **5.3 Risk of Angle Closure Glaucoma**

RHOFADE cream may increase the risk of angle closure glaucoma in patients with narrow-angle glaucoma. Advise patients to seek immediate medical care if signs and symptoms of acute angle closure glaucoma develop.

### **6 ADVERSE REACTIONS**

#### **6.1 Clinical Studies Experience**

Because clinical trials are conducted under varying conditions, adverse reaction rates observed in the clinical trials of a drug cannot be directly compared to rates in the clinical trials of another drug and may not reflect the rates observed in practice.

A total of 489 subjects with persistent facial erythema associated with rosacea were treated with RHOFADE cream once daily for 4 weeks in 3 controlled clinical trials. An additional 440 subjects with persistent facial erythema associated with rosacea were also treated with RHOFADE cream once daily for up to one year in a long-term (open-label) clinical trial. Adverse reactions that occurred in at least 1% of subjects treated with RHOFADE cream through 4 weeks of treatment are presented in Table 1 below.

**Table 1: Adverse Reactions Reported by  $\geq$  1% of Subjects through 4 Weeks**

## of Treatment in Controlled Clinical Trials

Adverse Reaction	Pooled Controlled Clinical Trials	
	RHOFADE Cream (N = 489)	Vehicle Cream (N = 483)
Application site dermatitis	9 (2%)	0
Worsening inflammatory lesions of rosacea	7 (1%)	1 (<1%)
Application site pruritus	5 (1%)	4 (1%)
Application site erythema	5 (1%)	2 (<1%)
Application site pain	4 (1%)	1 (<1%)

In the long-term (open-label) clinical trial, the rates of adverse reactions over a one-year treatment period were as follows: worsening inflammatory lesions of rosacea (3%), application site dermatitis (3%), application site pruritus (2%), application site pain (2%), and application site erythema (2%). Subjects with persistent erythema along with inflammatory lesions were allowed to use additional therapy for the inflammatory lesions of rosacea.

## 7 DRUG INTERACTIONS

### 7.1 Anti-hypertensives/Cardiac Glycosides

Alpha-adrenergic agonists, as a class, may impact blood pressure. Caution in using drugs such as beta-blockers, anti-hypertensives and/or cardiac glycosides is advised.

Caution should also be exercised in patients receiving alpha<sub>1</sub> adrenergic receptor antagonists such as in the treatment of cardiovascular disease, benign prostatic hypertrophy, or Raynaud's disease.

### 7.2 Monoamine Oxidase Inhibitors

Caution is advised in patients taking MAO inhibitors which can affect the metabolism and uptake of circulating amines.

## 8 USE IN SPECIFIC POPULATIONS

### 8.1 Pregnancy

#### Risk Summary

There are no available data on RHOFADE cream use in pregnant women to inform a drug-associated risk for major birth defects and miscarriage. A literature article describing intranasal decongestant use in pregnant women identified a potential association between second-trimester exposure to oxymetazoline (with no decongestant exposure in the first trimester) and renal collecting system anomalies [see *Data*]. In animal reproduction studies, there were no adverse developmental effects observed after oral administration of oxymetazoline hydrochloride in pregnant rats and rabbits at systemic exposures up to 3 times and 73 times, respectively, the exposure associated with the maximum recommended human dose (MRHD) [see *Data*]. The

estimated background risks of major birth defects and miscarriage for the indicated population are unknown. All pregnancies have a background risk of birth defect, loss, or other adverse outcomes. In the U.S. general population, the estimated background risk of major birth defects and miscarriage in clinically recognized pregnancies is 2-4% and 15-20%, respectively.

### Clinical Considerations

#### *Fetal/Neonatal Adverse Reactions*

Following repeated use of oxymetazoline hydrochloride solution nasal spray for the treatment of nasal congestion at a dose 5 times higher than recommended, one case of fetal distress was reported in a 41-week pregnant patient. The fetal distress resolved hours later, prior to the delivery of the healthy infant. The anticipated exposures for the case are 8- to 18-fold higher than plasma exposures after topical administration of RHOFADÉ cream.

### Data

#### *Human Data*

No adequate and well-controlled trials of RHOFADÉ cream have been conducted in pregnant women. Across all clinical trials of RHOFADÉ cream, two pregnancies were reported. One pregnancy resulted in the delivery of a healthy child. One pregnancy resulted in a spontaneous abortion, which was considered to be unrelated to the trial medication. A literature article summarizing the results of exploratory analyses of intranasal decongestant use during pregnancy identified a potential association between second-trimester exposure to oxymetazoline hydrochloride solution (with no decongestant exposure in the first trimester) and renal collecting system anomalies.

#### *Animal Data*

Effects on embryo-fetal development were evaluated in rats and rabbits following oral administration of oxymetazoline hydrochloride during the period of organogenesis. Oxymetazoline hydrochloride did not cause adverse effects to the fetus at oral doses up to 0.2 mg/kg/day in pregnant rats during the period of organogenesis (3 times the MRHD on an AUC comparison basis). Oxymetazoline hydrochloride did not cause adverse effects to the fetus at oral doses up to 1 mg/kg/day in pregnant rabbits during the period of organogenesis (73 times the MRHD on an AUC comparison basis). Maternal toxicity, such as decreased maternal body weight, was produced at the high dose of 1 mg/kg/day in pregnant rabbits and was associated with findings of delayed skeletal ossification.

In a rat perinatal and postnatal development study, oxymetazoline hydrochloride was orally administered to pregnant rats once daily from gestation day 6 through lactation day 20. Maternal toxicity was produced at the high dose of 0.2 mg/kg/day (3 times the MRHD on an AUC comparison basis) in pregnant rats and was associated with an increase in pup mortality and reduced pup body weights. Delayed sexual maturation was noted at 0.1 and 0.2 mg/kg/day (2 times the MRHD and 3 times the MRHD on an AUC comparison basis, respectively). Oxymetazoline hydrochloride did not have any adverse effects on fetal development at a dose of 0.05 mg/kg/day (one-half of the MRHD on an AUC comparison basis).

## **8.2 Lactation**

No clinical data are available to assess the effects of oxymetazoline on the quantity or rate of breastmilk production, or to establish the level of oxymetazoline present in human breastmilk post-dose. Oxymetazoline was detected in the milk of lactating rats. The developmental and health benefits of breastfeeding should be considered along with the mother's clinical need for RHOFADÉ cream and any potential adverse effects on the breastfed child from RHOFADÉ cream or from the underlying maternal condition.

#### 8.4 Pediatric Use

Safety and effectiveness of RHOFADÉ cream have not been established in pediatric patients below the age of 18 years.

#### 8.5 Geriatric Use

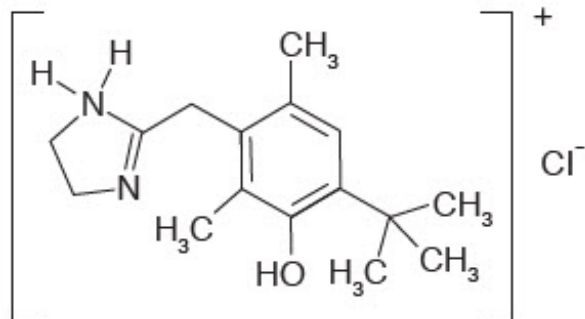
One hundred and ninety-three subjects aged 65 years and older received treatment with RHOFADÉ cream (n = 135) or vehicle (n = 58) in clinical trials. No overall differences in safety or effectiveness were observed between subjects  $\geq$  65 years of age and younger subjects, based on available data. Clinical studies of RHOFADÉ cream did not include sufficient numbers of subjects aged 65 and over to determine whether they respond differently from younger subjects.

### 10 OVERDOSAGE

RHOFADÉ cream is not for oral use. If oral ingestion occurs, seek medical advice. Monitor patient closely and administer appropriate supportive measures as necessary. Accidental ingestion of topical solutions (nasal sprays) containing imidazoline derivatives (e.g., oxymetazoline) in children has resulted in serious adverse events requiring hospitalization, including nausea, vomiting, lethargy, tachycardia, decreased respiration, bradycardia, hypotension, hypertension, sedation, somnolence, mydriasis, stupor, hypothermia, drooling, and coma. Keep RHOFADÉ cream out of reach of children.

### 11 DESCRIPTION

RHOFADÉ<sup>®</sup> (oxymetazoline hydrochloride) cream, 1% contains oxymetazoline hydrochloride, an  $\alpha_{1A}$  adrenoceptor agonist. RHOFADÉ is a white to off-white cream. It has a chemical name of 3-[(4,5-Dihydro-1H-imidazol-2-yl)methyl]-6-(1,1-dimethylethyl)-2,4-dimethyl-phenol hydrochloride and a molecular weight of 296.8. It is freely soluble in water and ethanol and has a partition coefficient of 0.1 in 1-octanol/water. The molecular formula of oxymetazoline HCl is  $C_{16}H_{25}ClN_2O$  and its structural formula is:



Each gram of RHOFADÉ<sup>®</sup> (oxymetazoline hydrochloride) cream contains 10 mg (1%)

oxymetazoline hydrochloride, equivalent to 8.8 mg (0.88%) of oxymetazoline free base. The cream contains the following inactive ingredients: sodium citrate dihydrate, citric acid anhydrous, disodium edetate dihydrate, butylated hydroxytoluene, anhydrous lanolin, medium chain triglycerides, diisopropyl adipate, oleyl alcohol, polyethylene glycol 300, PEG-6 stearate, glycol stearate, PEG-32 stearate, cetostearyl alcohol, cetareth-6, stearyl alcohol, cetareth-25, methylparaben, propylparaben, phenoxyethanol, and purified water.

## **12 CLINICAL PHARMACOLOGY**

### **12.1 Mechanism of Action**

Oxymetazoline is an  $\alpha_{1A}$  adrenoceptor agonist. Oxymetazoline acts as a vasoconstrictor.

### **12.2 Pharmacodynamics**

The pharmacodynamics of RHOFADÉ cream has not been studied.

### **12.3 Pharmacokinetics**

#### *Absorption*

The pharmacokinetics of oxymetazoline was evaluated following topical administration of RHOFADÉ cream in a thin layer to cover the entire face in adult subjects with erythema associated with rosacea. The median weight of cream for each dose administration was 0.3 g. Plasma oxymetazoline concentrations were measurable in most of the subjects. Following the first dose application, the mean  $\pm$  standard deviation (SD) peak concentrations ( $C_{max}$ ) and area under the concentration-time curves from time 0 to 24 hours ( $AUC_{0-24hr}$ ) were  $60.5 \pm 53.9$  pg/mL and  $895 \pm 798$  pg\*hr/mL, respectively. Following once daily applications for 28 days, the mean  $\pm$  SD  $C_{max}$  and  $AUC_{0-24hr}$  were  $66.4 \pm 67.1$  pg/mL and  $1050 \pm 992$  pg\*hr/mL, respectively. Following twice daily applications (twice the recommended frequency of application) for 28 days, the mean  $\pm$  SD  $C_{max}$  and  $AUC_{0-24hr}$  were  $68.8 \pm 61.1$  pg/mL and  $1530 \pm 922$  pg\*hr/mL, respectively.

#### *Distribution*

An *in vitro* study demonstrated that oxymetazoline is 56.7% to 57.5% bound to human plasma proteins.

#### *Metabolism*

*In vitro* studies using human liver microsomes showed that oxymetazoline was minimally metabolized, generating mono-oxygenated and dehydrogenated products of oxymetazoline. The percentage of parent drug oxymetazoline remaining was 95.9% after a 120-minute incubation with human liver microsomes.

#### *Excretion*

The excretion of oxymetazoline following administration of RHOFADÉ cream has not been characterized in humans.

#### *Drug Interaction*

*In vitro* studies using human liver microsomes demonstrated that oxymetazoline up to the tested concentration of 100 nM had no inhibition on the activities of the cytochrome P450 (CYP) isoenzymes 1A2, 2B6, 2C8, 2C9, 2C19, 2D6, and 3A4/5. Treatment of cultured human hepatocytes with up to 100 nM oxymetazoline did not induce CYP1A2, CYP2B6, or CYP3A4.

## 13 NONCLINICAL TOXICOLOGY

### 13.1 Carcinogenesis, Mutagenesis, Impairment of Fertility

Oxymetazoline hydrochloride was not associated with an increased incidence of neoplastic or proliferative changes in transgenic mice given oral doses of 0.5, 1.0, or 2.5 mg/kg/day oxymetazoline hydrochloride for 6 months.

Oxymetazoline hydrochloride revealed no evidence of mutagenic or clastogenic potential based on the results of two *in vitro* genotoxicity tests (Ames assay and human lymphocyte chromosomal aberration assay) and one *in vivo* genotoxicity test (mouse micronucleus assay).

Effects on fertility and early embryonic development were evaluated in rats following oral administration of 0.05, 0.1, or 0.2 mg/kg/day oxymetazoline hydrochloride prior to and during mating and through early pregnancy. Decreased number of corpora lutea and increased post-implantation losses were noted at 0.2 mg/kg/day oxymetazoline hydrochloride (3 times the MRHD on an AUC comparison basis). However, no treatment related effects on fertility or mating parameters were noted at 0.2 mg/kg/day oxymetazoline hydrochloride (3 times the MRHD on an AUC comparison basis).

## 14 CLINICAL STUDIES

RHOFADE cream was evaluated for the treatment of persistent erythema associated with rosacea in two identical, randomized, double-blind, vehicle-controlled, parallel-group clinical trials. The trials enrolled 885 subjects aged 18 years and older. Overall, 90% of subjects were Caucasian and 79% were female. Subjects applied either RHOFADE cream or vehicle once daily for 29 days.

Disease severity was graded by the clinician using a 5-point clinician erythema assessment (CEA) scale and by the subject on a similar 5-point subject self-assessment (SSA) scale, on which subjects scored either "moderate" or "severe" on both scales.

CEA and SSA were measured over a 12-hour period at equally-spaced timepoints (hours 3, 6, 9, and 12) post dose on Days 1, 15, and 29. The primary efficacy endpoint was defined as the proportion of subjects with at least a 2-grade reduction in erythema (improvement) from baseline (pre-dose on Day 1) on both the CEA and SSA measured at hours 3, 6, 9, and 12 on Day 29. The results from both trials on the composite endpoint for Day 29 are presented in Table 2.

**Table 2: Proportion of Subjects Achieving Composite Success\* on Day 29**

Timepoint (Hour)	Trial 1		Trial 2	
	RHOFADE Cream	Vehicle Cream (N=218)	RHOFADE Cream (N=224)	Vehicle Cream (N=221)



	(N=222)	(N=210)	(N=224)	(N=221)
3	12%	6%	14%	7%
6	16%	8%	13%	5%
9	18%	6%	16%	9%
12	15%	6%	12%	6%

\* Composite success is defined as the proportion of subjects achieving at least a 2-grade improvement on both CEA and SSA.

## 16 HOW SUPPLIED/STORAGE AND HANDLING

RHOFADE<sup>®</sup> (oxymetazoline hydrochloride) cream, 1%, is a white to off-white cream. The product is available in a laminated tube and an airless pump polypropylene bottle in the following packaging configurations, each with a child-resistant closure:

NDC 71403-003-30	30 gram tube
NDC 71403-003-45	45 gram tube
NDC 71403-003-60	60 gram tube
NDC 71403-003-35	30 gram pump
NDC 71403-003-65	60 gram pump

**Storage:** Store at 20°C-25°C (68°F-77°F); excursions permitted to 15°C-30°C (59°F-86°F) [see USP Controlled Room Temperature].

## 17 PATIENT COUNSELING INFORMATION

Advise the patient and/or caregiver to read the FDA-approved patient labeling (*Patient Information and Instructions for Use*).

### Important Administration Instructions

Advise patients of the following:

- RHOFADE cream is for topical use only.
- RHOFADE cream pumps require priming before initial use and discard product from the first three pumps.
- Do not apply RHOFADE cream to irritated skin or open wounds.
- Avoid contact with the eyes and lips.
- Wash hands immediately after application.
- Keep RHOFADE cream out of reach of children.

Manufactured for EPI Health, LLC, Charleston, SC 29403, U.S.A. by DPT Laboratories, Ltd, San Antonio, TX 78215

RHOFADE and its design are registered trademarks of EPI Health, LLC

EPI Health and its design are trademarks of EPI Health, LLC

Patented. U.S. Patent Numbers: U.S. 7,812,049; U.S. 8,420,688; U.S. 8,815,929; U.S. 8,883,838; U.S. 9,974,773 and U.S. 10335391. Made in the U.S.A.

**EPIHEALTH**

**PATIENT INFORMATION**  
**RHOFADE® (roe' fayd)**  
**(oxymetazoline hydrochloride) cream**

**Important:** RHOFADE cream is for skin (topical) use on the face only. Do not use RHOFADE cream in your eyes, mouth, or vagina.

**Keep RHOFADE cream out of the reach of children.**

**Get medical help right away if you, a child, or anyone else swallows RHOFADE cream.**

**What is RHOFADE cream?**

RHOFADE cream is a prescription medicine used on the skin (topical) to treat facial redness due to rosacea that does not go away (persistent) in adults.

It is not known if RHOFADE cream is safe and effective in children under 18 years of age.

**Before you use RHOFADE cream, tell your healthcare provider about all of your medical conditions, including if you:**

- have heart, blood vessel, or blood pressure problems. Call your healthcare provider or get medical help if these conditions worsen.
- have problems with blood circulation or have had a stroke
- have Sjögren's Syndrome
- have scleroderma
- have Raynaud's phenomenon
- have thromboangiitis obliterans
- have narrow-angle glaucoma. Call your healthcare provider or get medical help if your glaucoma worsens.
- have irritated skin or open sores on the face
- are pregnant or plan to become pregnant. It is not known if RHOFADE cream will harm your unborn baby.
- are breastfeeding. It is not known if RHOFADE cream passes into your breast milk. Talk to your healthcare provider about the best way to feed your baby if you use RHOFADE cream.

**Tell your healthcare provider about all the medicines you take,** including prescription and over-the-counter medicines, skin products, vitamins, and herbal supplements. Using RHOFADE cream with certain other medicines may affect each other and can cause serious side effects.

**How should I use RHOFADE cream?**

- See the detailed Instructions for Use that comes with your RHOFADE cream tube or pump for information about how to apply RHOFADE cream correctly.
- Use RHOFADE cream exactly as your healthcare provider tells you. Do not use more RHOFADE cream than prescribed.
- RHOFADE cream is for use on your skin only. **Do not** use RHOFADE cream in your eyes, mouth, or vagina. Avoid contact with your lips and eyes.
- **Do not** apply RHOFADE cream to irritated skin or open wounds.

**What are the possible side effects of RHOFADE cream?**

The most common side effects of RHOFADE cream include application site reactions of:

- skin reactions (dermatitis)

- worsening of rosacea pimples
- itching
- redness
- pain

These are not all the possible side effects of RHOFADÉ cream.

Call your doctor for medical advice about side effects. You may report side effects to FDA at 1-800-FDA-1088.

**How should I store RHOFADÉ cream?**

- Store RHOFADÉ cream at room temperature between 68°F to 77°F (20°C to 25°C).

**Keep RHOFADÉ cream and all medicines out of the reach of children.**

**General information about the safe and effective use of RHOFADÉ cream**

Medicines are sometimes prescribed for purposes other than those listed in a Patient Information leaflet. Do not use RHOFADÉ cream for a condition for which it was not prescribed. Do not give RHOFADÉ cream to other people, even if they have the same symptoms that you have. It may harm them. You can ask your pharmacist or healthcare provider for information about RHOFADÉ cream that is written for health professionals.

**What are the ingredients in RHOFADÉ cream?**

**Active ingredient:** oxymetazoline hydrochloride

**Inactive ingredients:** sodium citrate dihydrate, citric acid anhydrous, disodium edetate dihydrate, butylated hydroxytoluene, anhydrous lanolin, medium chain triglycerides, diisopropyl adipate, oleyl alcohol, polyethylene glycol 300, PEG-6 stearate, glycol stearate, PEG-32 stearate, cetostearyl alcohol, cetareth-6, stearyl alcohol, cetareth-25, methylparaben, propylparaben, phenoxyethanol, and purified water  
 Manufactured for EPI Health, LLC, Charleston, SC 29403, U.S.A. by DPT Laboratories, Ltd, San Antonio, TX 78215

RHOFADÉ and its design are registered trademarks of EPI Health, LLC

EPI Health and its design are trademarks of EPI Health, LLC

Patented. U.S. Patent Numbers: U.S. 7,812,049; U.S. 8,420,688; U.S. 8,815,929; U.S. 8,883,838; U.S. 9,974,773 and U.S. 10335391. Made in the U.S.A.

**EPIHEALTH**

*Advancing Dermatology*

This Patient Information has been approved by the U.S. Food and Drug Administration  
 Approved: 11/2019

**INSTRUCTIONS FOR USE**  
**RHOFADÉ® (roe' fayd)**  
**(oxymetazoline hydrochloride) cream**  
**Tube**

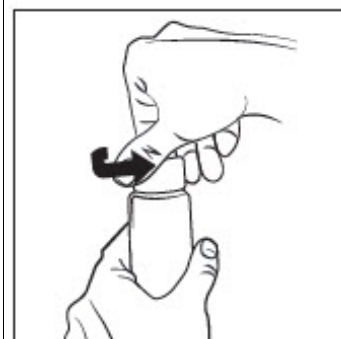
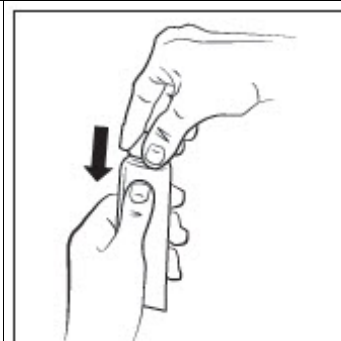
**Important:**

- RHOFADÉ cream is for skin (topical) use on the face only. Do not use RHOFADÉ cream in your eyes, mouth, or vagina.
- **Keep RHOFADÉ cream out of the reach of children.**
- **Get medical help right away if you, a child, or anyone else swallows RHOFADÉ cream.**

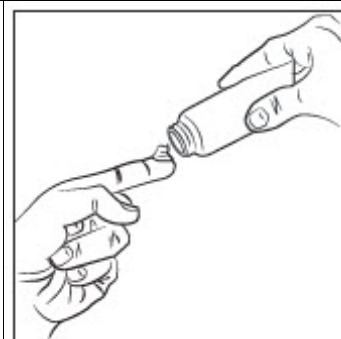
Read and follow the steps below so that you use your tube of RHOFADE cream correctly:

**Step 1:** Open the tube of RHOFADE cream by gently pressing down on the child-resistant cap and twisting it counterclockwise until the cap is removed. Do not squeeze the tube while opening or closing.

**Note:** When the cap is removed, the tube is not child-resistant.



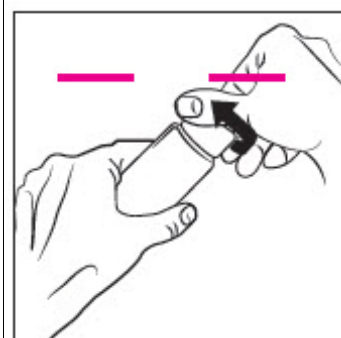
**Step 2:** To apply RHOFADE cream to your face, squeeze a pea-sized amount of RHOFADE cream from the tube onto your fingertip.



**Step 3:** Apply the pea-sized amount of RHOFADE cream to cover your entire face (forehead, nose, each cheek, and chin) 1 time each day. Spread the cream smoothly and evenly in a thin layer over your face.

- Avoid contact with your eyes and lips.
- **Do not** apply cream to irritated skin or open wounds.

**Step 4:** To close your RHOFADE cream tube, place the cap back on the tube. Press down on the child-resistant cap and twist clockwise until it stops. The tube is child-resistant again.



**Step 5:** Wash your hands right away after applying RHOFADE cream.

**How do I store RHOFADE cream?**

- Store RHOFADÉ cream at room temperature between 68°F to 77°F (20°C to 25°C).  
**Keep RHOFADÉ cream and all medicines out of the reach of children.**

This Instructions for Use has been approved by the U.S. Food and Drug Administration.

Manufactured for EPI Health, LLC, Charleston, SC 29403, U.S.A. by DPT Laboratories, Ltd, San Antonio, TX 78215

RHOFADÉ and its design are registered trademarks of EPI Health, LLC

EPI Health and its design are trademarks of EPI Health, LLC

Patented. U.S. Patent Numbers: U.S. 7,812,049; U.S. 8,420,688; U.S. 8,815,929; U.S. 8,883,838; U.S. 9,974,773 and U.S. 10335391. Made in the U.S.A.

Approved: 11/2019

**EPIHEALTH**

*Advancing Dermatology*

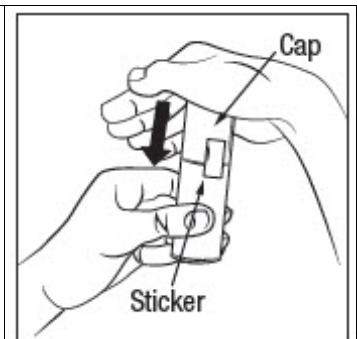
**INSTRUCTIONS FOR USE**  
**RHOFADÉ® (roe' fayd)**  
**(oxymetazoline hydrochloride) cream**  
**Pump**

**Important:**

- RHOFADÉ cream is for skin (topical) use on the face only. Do not use RHOFADÉ cream in your eyes, mouth, or vagina.
- **Keep RHOFADÉ cream out of the reach of children.**
- **Get medical help right away if you, a child, or anyone else swallows RHOFADÉ cream.**

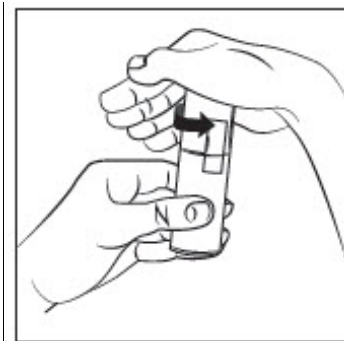
Read and follow the steps below so that you use your RHOFADÉ cream pump correctly:

**Step 1:** Open the RHOFADÉ cream pump by pushing down on the child resistant cap and twisting it counterclockwise until the cap is removed. The clear sticker will break when opening for the

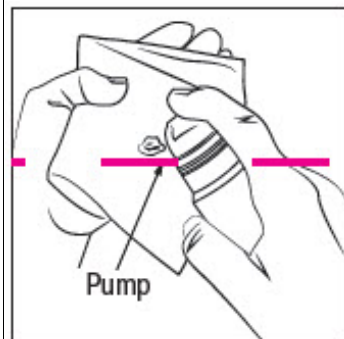


first time.

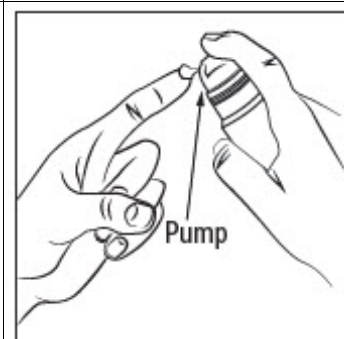
**Note:** When the cap is removed, the pump is not child-resistant.



**Prime your RHOFADE cream pump before the first use only.** Hold the pump upright and press down several times until the cream is dispensed onto a tissue. Pump 3 more times onto the tissue and throw away (discard) the tissue. Your pump is now ready to use.



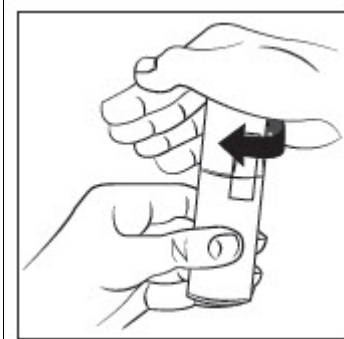
**Step 2:** To apply RHOFADE cream to your face, press down on the pump one time to dispense a pea-sized amount of RHOFADE cream onto your fingertip.



**Step 3:** Apply the pea-sized amount of RHOFADE cream to cover your entire face (forehead, nose, each cheek, and chin) 1 time each day. Spread the cream smoothly and evenly in a thin layer over your face.

- Avoid contact with your eyes and lips.
- **Do not** apply RHOFADE cream to irritated skin or open wounds.

**Step 4:** To close your RHOFADE cream pump, place the cap back on the pump. Push down on the child-resistant cap and turn the cap clockwise until it stops. The pump is child-resistant again.



**Step 5:** Wash your hands right away after applying RHOFADE cream.

**How do I store RHOFADE cream?**

- Store RHOFADE cream at room temperature between 68°F to 77°F (20°C to 25°C).  
**Keep RHOFADE cream and all medicines out of the reach of children.**

This Instructions for Use has been approved by the U.S. Food and Drug Administration.

Manufactured for EPI Health, LLC, Charleston, SC 29403, U.S.A. by DPT Laboratories, Ltd, San Antonio, TX 78215

RHOFADE and its design are registered trademarks of EPI Health, LLC

EPI Health and its design are trademarks of EPI Health, LLC

Patented. U.S. Patent Numbers: U.S. 7,812,049; U.S. 8,420,688; U.S. 8,815,929; U.S. 8,883,838; U.S. 9,974,773 and U.S. 10335391. Made in the U.S.A.

Approved: 11/2019

**EPIHEALTH**

*Advancing Dermatology*

**PRINCIPAL DISPLAY PANEL - 30 g Tube Carton**

NDC 71403-003-30

Rhofade<sup>®</sup>

(oxymetazoline

hydrochloride) cream, 1%\*

\*Each gram of RHOFADE<sup>®</sup> cream contains 10 mg of oxymetazoline hydrochloride, equivalent to 8.8 mg of oxymetazoline free base

For Topical Use Only

Keep Out of Reach of Children

EPIHEALTH

*Advancing Dermatology*

Rx only

30 g

PPD

30 g

Rhofade  
(oxymetazoline hydrochloride) cream, 1%

NDC 71403-003-30

Rhofade  
(oxymetazoline hydrochloride) cream, 1%

\*Each gram of RHOFADÉ\* cream contains 10 mg of oxymetazoline hydrochloride, equivalent to 8.8 mg of oxymetazoline free base

For Topical Use Only  
Keep Out of Reach of Children

EPIHEALTH  
Advancing Dermatology

Rx only  
30 g



0 71403-00330 1

Not for oral, ophthalmic, or intravaginal use.

To Open Tube: Push cap in and turn counterclockwise, a quarter of a turn, and remove cap.

Dosage: Apply a pea-sized amount once daily in a thin layer to cover the entire face (forehead, nose, each cheek, and chin), avoiding the eyes and lips.

Storage: Store at 20°C-25°C (68°F-77°F), excursions permitted to 15°C-30°C (59°F-86°F) [see USP Controlled Room Temperature].

Each gram contains the active ingredient oxymetazoline hydrochloride 10 mg (1%) with the inactive ingredients sodium citrate dihydrate, citric acid anhydrous, disodium edetate dihydrate, butylated hydroxytoluene, anhydrous lanolin, medium chain triglycerides, diisopropyl adipate, oleyl alcohol, polyethylene glycol 300, PEG-6 stearate, glycol stearate, PEG-32 stearate, cetostearyl alcohol, cetearath-6, stearyl alcohol, cetearath-25, methylparaben, propylparaben, phenoxyethanol, and purified water.

Manufactured for EPI Health, LLC  
Charleston, SC 29403, U.S.A.  
By DPT Laboratories, Ltd  
San Antonio, TX 78215  
All trademarks are the property of their respective owners.  
US Patents 7812049, 8420688, 8883838, 8815929, 9974773, 10335391  
Made in U.S.A.

117602  
rev1119

# RHOFADÉ

oxymetazoline hydrochloride cream



## Product Information

<b>Product Type</b>	HUMAN PRESCRIPTION DRUG	<b>Item Code (Source)</b>	NDC:71403-003
<b>Route of Administration</b>	TOPICAL		

## Active Ingredient/Active Moiety

<b>Ingredient Name</b>	<b>Basis of Strength</b>	<b>Strength</b>
<b>OXYMETAZOLINE HYDROCHLORIDE</b> (UNII: K89MJ0S5VY) (oxymetazoline - UNII:8VLN5B44ZY)	OXYMETAZOLINE HYDROCHLORIDE	1 g in 100 g

## Inactive Ingredients

<b>Ingredient Name</b>	<b>Strength</b>
<b>TRISODIUM CITRATE DIHYDRATE</b> (UNII: B22547B95K)	
<b>ANHYDROUS CITRIC ACID</b> (UNII: XF417D3PSL)	
<b>EDETATE DISODIUM</b> (UNII: 7FLD91C86K)	
<b>butylated hydroxytoluene</b> (UNII: 1P9D0Z171K)	
<b>LANOLIN</b> (UNII: 7EV65EAW6H)	
<b>MEDIUM-CHAIN TRIGLYCERIDES</b> (UNII: C9H2L21V7U)	
<b>diisopropyl adipate</b> (UNII: P7E6YFV72X)	
<b>oleyl alcohol</b> (UNII: 172F2WN8DV)	
<b>polyethylene glycol 300</b> (UNII: 5655G9Y8AQ)	
<b>PEG-6 stearate</b> (UNII: 8LQC57C6B0)	
<b>glycol stearate</b> (UNII: 0324G66D0E)	
<b>cetostearyl alcohol</b> (UNII: 2DMT128M1S)	
<b>cetareth-6</b> (UNII: 2RJS3559D3)	
<b>stearyl alcohol</b> (UNII: 2KR89I4H1Y)	
<b>cetareth-25</b> (UNII: 8FA93U5T67)	
<b>METHYLPARABEN</b> (UNII: A2I8C7HI9T)	
<b>PROPYLPARABEN</b> (UNII: Z8IX2SC1OH)	
<b>phenoxyethanol</b> (UNII: HIE492ZZ3T)	
<b>WATER</b> (UNII: 059QF0KO0R)	
<b>PEG-32 stearate</b> (UNII: 33GX5WQC0M)	

## Product Characteristics

<b>Color</b>	WHITE (White to off-white)	<b>Score</b>	
<b>Shape</b>		<b>Size</b>	
<b>Flavor</b>		<b>Imprint Code</b>	
<b>Contains</b>			

## Packaging

<b>#</b>	<b>Item Code</b>	<b>Package Description</b>	<b>Marketing Start Date</b>	<b>Marketing End Date</b>
1	NDC:71403-003-30	1 in 1 CARTON	01/18/2021	
1		30 g in 1 TUBE; Type 0: Not a Combination Product		

2	NDC:71403-003-15	1 in 1 CARTON	01/18/2021	
2		3 g in 1 TUBE; Type 0: Not a Combination Product		

## Marketing Information

Marketing Category	Application Number or Monograph Citation	Marketing Start Date	Marketing End Date
NDA	NDA208552	01/18/2021	

**Labeler** - EPI Health, LLC (080638894)

**Registrant** - DPT Laboratories, Ltd. (832224526)

## Establishment

Name	Address	ID/FEI	Business Operations
DPT Laboratories, Ltd.		832224526	MANUFACTURE(71403-003)

Revised: 5/2023

EPI Health, LLC