



451269D/Revised: June 2018

Piperacillin and Tazobactam for Injection, USP

51734036

HIGHLIGHTS OF PRESCRIBING INFORMATION

These highlights do not include all the information needed to use PIPERACILLIN AND TAZOBACTAM FOR INJECTION safely and effectively. See full prescribing information for PIPERACILLIN AND TAZOBACTAM FOR INJECTION.

PIPERACILLIN AND TAZOBACTAM for injection, for intravenous use
Initial U.S. Approval: 1993

RECENT MAJOR CHANGES

Warnings and Precautions, Nephrotoxicity in Critically Ill Patients (5.5) 5/2017

INDICATIONS AND USAGE

Piperacillin and tazobactam for injection is a combination penicillin-class antibacterial and β-lactamase inhibitor indicated for treatment of:

- Intra-abdominal infections (1.1)
- Skin and skin structure infections (1.2)
- Female pelvic infections (1.3)
- Community-acquired pneumonia (1.4)
- Nosocomial pneumonia (1.5)
- Usage (1.6)

To reduce the development of drug-resistant bacteria and maintain the effectiveness of piperacillin and tazobactam for injection and other antibacterial drugs, piperacillin and tazobactam for injection should be used only to treat or prevent infections that are proven or strongly suspected to be caused by bacteria. (1.6)

DOSAGE AND ADMINISTRATION

- The usual daily dose of piperacillin and tazobactam for injection for adults is 3,375 g every six hours totaling 13.5 g (12 g piperacillin/1.5 g tazobactam). (2.1)
- Initial presumptive treatment of patients with nosocomial pneumonia should start with piperacillin and tazobactam for injection at a dosage of 4.5 g every six hours plus an aminoglycoside, totaling 18 g (16 g piperacillin/2 g tazobactam). (2.2)
- Dosage in patients with renal impairment (≤ 40 mL/min of CrCL) and dialysis patients should be reduced, based on the degree of actual renal function impairment. (2.3)
- For children with appendicitis and/or peritonitis the recommended piperacillin and tazobactam for injection dosage is 100 mg piperacillin/12.5 mg tazobactam per kilogram of body weight, every 8 hours in pediatric patients 9 months of age and older. For pediatric patients 2 to 9 months of age, the recommended dosage is 80 mg piperacillin/10 mg tazobactam per kilogram of body weight, every 8 hours. (2.4)
- Piperacillin and tazobactam for injection and aminoglycosides should be reconstituted, diluted, and administered separately. Co-administration via Y-site can be done under certain conditions. (2.7)

DOSAGE FORMS AND STRENGTHS

Piperacillin and tazobactam for injection: 2.25 g, 3.375 g, and 4.5 g lyophilized powder for reconstitution in single-dose vials. (3)

CONTRAINDICATIONS

Patients with a history of allergic reactions to any of the penicillins, cephalosporins, or β-lactamase inhibitors. (4)

FULL PRESCRIBING INFORMATION: CONTENTS*

1 INDICATIONS AND USAGE

- 1.1 Intra-abdominal Infections
- 1.2 Skin and Skin Structure Infections
- 1.3 Female Pelvic Infections
- 1.4 Community-acquired Pneumonia
- 1.5 Nosocomial Pneumonia
- 1.6 Usage

2 DOSAGE AND ADMINISTRATION

- 2.1 Adult Patients
- 2.2 Nosocomial Pneumonia
- 2.3 Renal Impairment
- 2.4 Pediatric Patients
- 2.5 Reconstitution and Dilution of Powder Formulations
- 2.7 Compatibility with Aminoglycosides

3 DOSAGE FORMS AND STRENGTHS

4 CONTRAINDICATIONS

5 WARNINGS AND PRECAUTIONS

- 5.1 Hypersensitivity Adverse Reactions
- 5.2 Severe Cutaneous Adverse Reactions
- 5.3 Hematologic Adverse Reactions
- 5.4 Central Nervous System Adverse Reactions
- 5.5 Nephrotoxicity in Critically Ill Patients
- 5.6 Electrolyte Effects
- 5.7 *Clostridium difficile* Associated Diarrhea
- 5.8 Development of Drug-Resistant Bacteria

6 ADVERSE REACTIONS

- 6.1 Clinical Trials Experience
- 6.2 Post-Marketing Experience
- 6.3 Additional Experience with Piperacillin

FULL PRESCRIBING INFORMATION

To reduce the development of drug-resistant bacteria and maintain the effectiveness of piperacillin and tazobactam for injection and other antibacterial drugs, piperacillin and tazobactam for injection should be used only to treat or prevent infections that are proven or strongly suspected to be caused by bacteria.

1 INDICATIONS AND USAGE

Piperacillin and tazobactam for injection is a combination product consisting of a penicillin-class antibacterial, piperacillin, and a β-lactamase inhibitor, tazobactam, indicated for the treatment of patients with moderate to severe infections caused by susceptible isolates of the designated bacteria in the conditions listed below.

1.1 Intra-abdominal Infections

Appendicitis (complicated by rupture or abscess) and peritonitis caused by β-lactamase producing isolates of *Escherichia coli* or the following members of the Enterobacteriaceae group: *B. fragilis*, *B. ovatus*, *B. theta*, *Aeromonas*, or *B. vulgatus*. The individual members of this group were studied in fewer than 10 cases.

1.2 Skin and Skin Structure Infections

Uncomplicated and complicated skin and skin structure infections, including cellulitis, cutaneous abscesses and ischemic/diabetic

WARNINGS AND PRECAUTIONS

- Serious hypersensitivity reactions (anaphylactic/anaphylactoid) reactions have been reported in patients receiving piperacillin and tazobactam for injection. Discontinue piperacillin and tazobactam for injection if a reaction occurs. (5.1)
- Piperacillin and tazobactam for injection may cause severe cutaneous adverse reactions, such as Stevens-Johnson syndrome, toxic epidermal necrolysis, drug reaction with eosinophilia and systemic symptoms, and acute generalized exanthematous pustulosis. (5.2) Discontinue piperacillin and tazobactam for injection for progressive rashes.
- Hematological effects (including bleeding, leukopenia and neutropenia) have occurred. Monitor hematologic tests during prolonged therapy. (5.3)
- Nephrotoxicity in critically ill patients has been observed; the use of piperacillin and tazobactam for injection was found to be an independent risk factor for renal failure and was associated with delayed recovery of renal function as compared to other beta-lactam antibacterial drugs in a randomized, multicenter, controlled trial in critically ill patients. Based on this study, alternative treatment options should be considered in the critically ill population. If alternative treatment options are inadequate or unavailable, monitor renal function during treatment with piperacillin and tazobactam for injection. (5.5)
- *Clostridium difficile* associated diarrhea: evaluate patients if diarrhea occurs. (5.7)

ADVERSE REACTIONS

The most common adverse reactions (incidence > 5%) are diarrhea, constipation, nausea, headache and insomnia. (6.1)

To report SUSPECTED ADVERSE REACTIONS, contact Fresenius Kabi USA, LLC at 1-800-551-7176 or FDA at 1-800-FDA-1088 or www.fda.gov/medwatch.

DRUG INTERACTIONS

- Piperacillin and tazobactam for injection administration can significantly reduce tobramycin concentrations in hemodialysis patients. Monitor tobramycin concentrations in these patients. (7.1)
- Probenecid prolongs the half-lives of piperacillin and tazobactam and should not be co-administered with piperacillin and tazobactam for injection unless the benefit outweighs the risk. (7.2)
- Co-administration of piperacillin and tazobactam for injection with vancomycin may increase the incidence of acute kidney injury. Monitor kidney function in patients receiving piperacillin and tazobactam for injection and vancomycin. (7.3)
- Monitor coagulation parameters in patients receiving piperacillin and tazobactam for injection and heparin or oral anticoagulants. (7.4)
- Piperacillin and tazobactam for injection may prolong the neuromuscular blockade of vecuronium and other non-depolarizing muscle relaxants. Monitor for adverse reactions related to neuromuscular blockade. (7.5)

USE IN SPECIFIC POPULATIONS

Dosage in patients with renal impairment (≤ 40 mL/min of CrCL) should be reduced to the degree of actual renal function impairment. (2.3, 8.6)

See 17 for PATIENT COUNSELING INFORMATION.

Revised: 6/2018

7 DRUG INTERACTIONS

- 7.1 Aminoglycosides
- 7.2 Probenecid
- 7.3 Vancomycin
- 7.4 Anticoagulants
- 7.5 Vecuronium
- 7.6 Methotrexate
- 7.7 Effects on Laboratory Tests

8 USE IN SPECIFIC POPULATIONS

- 8.1 Pregnancy
- 8.2 Lactation
- 8.4 Pediatric Use
- 8.5 Geriatric Use
- 8.6 Renal Impairment
- 8.7 Hepatic Impairment
- 8.8 Patients with Cystic Fibrosis

10 OVERDOSAGE

11 DESCRIPTION

- 12.1 Mechanism of Action
- 12.2 Pharmacodynamics
- 12.3 Pharmacokinetics
- 12.4 Microbiology

13 NONCLINICAL TOXICOLOGY

- 13.1 Carcinogenesis, Mutagenesis, Impairment of Fertility

15 REFERENCES

16 HOW SUPPLIED/STORAGE AND HANDLING

17 PATIENT COUNSELING INFORMATION

*Sections or subsections omitted from the full prescribing information are not listed.

foot infections caused by β-lactamase producing isolates of *Staphylococcus aureus*.

1.3 Female Pelvic Infections

Postpartum endometritis or pelvic inflammatory disease caused by β-lactamase producing isolates of *Escherichia coli*.

1.4 Community-acquired Pneumonia

Community-acquired pneumonia (moderate severity only) caused by β-lactamase producing isolates of *Haemophilus influenzae*.

1.5 Nosocomial Pneumonia

Nosocomial pneumonia (moderate to severe) caused by β-lactamase producing isolates of *Staphylococcus aureus* and by piperacillin/tazobactam-susceptible *Acinetobacter baumannii*, *Haemophilus influenzae*, *Klebsiella pneumoniae*, and *Pseudomonas aeruginosa* (Nosocomial pneumonia caused by *P. aeruginosa* should be treated in combination with an aminoglycoside) [see *Dosage and Administration* (2)].

1.6 Usage

To reduce the development of drug-resistant bacteria and maintain the effectiveness of piperacillin and tazobactam for injection and other antibacterial drugs, piperacillin and tazobactam for injection

should be used only to treat or prevent infections that are proven or strongly suspected to be caused by bacteria. When culture and susceptibility information are available, they should be considered in selecting or modifying antibacterial therapy. In the absence of such data, local epidemiology and susceptibility patterns may contribute to the empiric selection of therapy.

2 DOSAGE AND ADMINISTRATION

Piperacillin and tazobactam for injection should be administered by intravenous infusion over 30 minutes.

2.1 Adult Patients

The usual total daily dose of piperacillin and tazobactam for injection for adults is 3,375 g every six hours totaling 13.5 g (12 g piperacillin/1.5 g tazobactam). The usual duration of piperacillin and tazobactam for injection treatment is from 7 to 10 days.

Piperacillin and tazobactam for injection should be administered by intravenous infusion over 30 minutes.

2.2 Nosocomial Pneumonia

Initial presumptive treatment of patients with nosocomial pneumonia should start with piperacillin and tazobactam for injection at a dosage of 4.5 g every six hours plus an aminoglycoside, totaling 18 g (16 g piperacillin/2 g tazobactam). The recommended duration of piperacillin and tazobactam for injection treatment for nosocomial pneumonia is 7 to 14 days. Treatment with the aminoglycoside should be continued in patients from whom *P. aeruginosa* is isolated.

2.3 Renal Impairment

In patients with renal impairment (creatinine clearance ≤ 40 mL/min) and dialysis patients (hemodialysis and CAPD), the intravenous dose of piperacillin and tazobactam for injection should be reduced to the degree of actual renal function impairment. The recommended daily doses of piperacillin and tazobactam for injection for patients with renal impairment are as follows:

| Table 1: Recommended Dosing of Piperacillin and Tazobactam for Injection in Patients with Normal Renal Function and Renal Impairment (As Total grams piperacillin/tazobactam) | | |
|---|---|----------------------|
| Renal Function (creatinine clearance, mL/min) | All Indications (except nosocomial pneumonia) | Nosocomial Pneumonia |
| > 40 mL/min | 3.375 q 6 h | 4.5 q 6 h |
| 20 to 40 mL/min* | 2.25 q 6 h | 3.375 q 6 h |
| < 20 mL/min* | 2.25 q 8 h | 2.25 q 6 h |
| Hemodialysis** | 2.25 q 12 h | 2.25 q 8 h |
| CAPD | 2.25 q 12 h | 2.25 q 8 h |

* Creatinine clearance for patients not receiving hemodialysis
** 0.75 g (0.67 g piperacillin/0.08 g tazobactam) should be administered following each hemodialysis session on hemodialysis days.

For patients on hemodialysis, the maximum dose is 2.25 g every twelve hours for all indications other than nosocomial pneumonia and 2.25 g every eight hours for nosocomial pneumonia. Since hemodialysis removes 30% to 40% of the administered dose, an additional dose of 0.75 g piperacillin and tazobactam for injection (0.67 g piperacillin/0.08 g tazobactam) should be administered following each dialysis period on hemodialysis days. No additional dosage of piperacillin and tazobactam for injection is necessary for CAPD patients.

2.4 Pediatric Patients

For children with appendicitis and/or peritonitis 9 months of age or older, weighing up to 40 kg, and with normal renal function, the recommended piperacillin and tazobactam for injection dosage is 100 mg piperacillin/12.5 mg tazobactam per kilogram of body weight, every 8 hours. For pediatric patients between 2 months and 9 months of age, the recommended piperacillin and tazobactam for injection dosage based on pharmacokinetic modeling, is 80 mg piperacillin/10 mg tazobactam per kilogram of body weight, every 8 hours [see *Use in Specific Populations* (8.4) and *Clinical Pharmacology* (12.3)]. Pediatric patients weighing over 40 kg and with normal renal function should receive the adult dose.

It has not been determined how to adjust piperacillin and tazobactam for injection dosage in pediatric patients with renal impairment.

2.5 Reconstitution and Dilution of Powder Formulations

Single dose vials
Reconstitute piperacillin and tazobactam for injection single dose vials with a compatible reconstitution diluent from the list provided below. 2.25 g, 3.375 g, and 4.5 g piperacillin and tazobactam for injection should be reconstituted with 10 mL, 15 mL, and 20 mL, respectively. Swirl until dissolved.

Compatible Reconstitution Diluents for Single Dose Vials.
0.9% sodium chloride for injection
Sterile water for injection

Dextrose 5%
Bacteriostatic saline/parabens
Bacteriostatic water/parabens
Bacteriostatic saline/benzyl alcohol
Bacteriostatic water/benzyl alcohol

3 DOSAGE FORMS AND STRENGTHS

Piperacillin and tazobactam for injection, USP is supplied as a white to off-white powder in single dose vials in the following sizes: Each piperacillin and tazobactam for injection, USP 2.25 g single dose vial provides piperacillin sodium equivalent to 2 grams of piperacillin and tazobactam sodium equivalent to 0.25 g of tazobactam.

Each piperacillin and tazobactam for injection, USP 3.375 g single dose vial provides piperacillin sodium equivalent to 3 grams of piperacillin and tazobactam sodium equivalent to 0.375 g of tazobactam. Each piperacillin and tazobactam for injection, USP 4.5 g single dose vial provides piperacillin sodium equivalent to 4 grams of piperacillin and tazobactam sodium equivalent to 0.5 g of tazobactam.

Compatible Intravenous Solutions for Single Dose Vials
0.9% sodium chloride for injection
sterile water for injection[†]
Dextran 6% in saline
Dextrose 5%

4 CONTRAINDICATIONS

Piperacillin and tazobactam for injection is contraindicated in patients with a history of allergic reactions to any of the penicillins, cephalosporins, or β-lactamase inhibitors.

† LACTATED RINGER'S SOLUTION IS NOT COMPATIBLE WITH PIPERACILLIN AND TAZOBACTAM FOR INJECTION.

[†] Maximum recommended volume per dose of sterile water for injection is 50 mL.

Piperacillin and tazobactam for injection should not be mixed with other drugs in the syringe or infusion bottle since compatibility has not been established.

Piperacillin and tazobactam for injection is not chemically stable in solutions that contain only sodium bicarbonate and solutions that do not empiric selection of therapy.

Piperacillin and tazobactam for injection should not be added to blood products or albumin hydrolysates. Parenteral drug products should be inspected visually for particulate matter or discoloration prior to administration, whenever solution and container permit.

Stability of Piperacillin and Tazobactam for Injection Powder Formulations Following Reconstitution

Piperacillin and tazobactam for injection reconstituted single dose vials is stable in glass and plastic containers (plastic syringes, I.V. bags and tubing) when used with compatible diluents. Discard unused portions after storage for 24 hours at room temperature or after storage for 48 hours at refrigerated temperature (2°C to 8°C [36°F to 46°F]).

Single dose vials should be used immediately after reconstitution. Discard any unused portion after 24 hours if stored at room temperature (20°C to 25°C [68°F to 77°F]), or after 48 hours if stored at refrigerated temperature (2°C to 8°C [36°F to 46°F]). Single dose vials should not be frozen after reconstitution.

Stability studies in the I.V. bags have demonstrated chemical stability (potency, pH of reconstituted solution and clarity of solution) for up to 24 hours at room temperature and up to one week at refrigerated temperature. Piperacillin and tazobactam for injection contains no preservatives. Appropriate consideration of aseptic technique should be used.

Piperacillin and tazobactam for injection reconstituted single dose vials can be used in ambulatory intravenous infusion pumps. Stability of piperacillin and tazobactam for injection in an ambulatory intravenous infusion pump has been demonstrated for a period of 12 hours at room temperature. Each dose was reconstituted and diluted to a volume of 37.5 mL or 25 mL. One-half of the dosing solution were aseptically transferred into the medication reservoir (I.V. bags or cartridge). The reservoir was fitted to a preprogrammed ambulatory intravenous infusion pump per the manufacturer's instructions. Stability of piperacillin and tazobactam for injection is not affected when administered using an ambulatory intravenous infusion pump.

2.7 Compatibility with Aminoglycosides

Due to the *in vitro* inactivation of aminoglycosides by piperacillin, piperacillin and tazobactam for injection and aminoglycosides are recommended for separate administration. Piperacillin and tazobactam for injection and aminoglycosides should be reconstituted, diluted, and administered separately when concomitant therapy with aminoglycosides is indicated [see *Drug Interactions* (7.1)]. In circumstances where co-administration via Y-site is necessary, piperacillin and tazobactam for injection are compatible for simultaneous co-administration via Y-site infusion only with the following aminoglycosides under the following conditions:

Table 2: Compatibility with Aminoglycosides

| Aminoglycoside | Piperacillin and Tazobactam for Injection Dose (grams) | Piperacillin and Tazobactam for Injection Diluent Volume ^a (mL) | Aminoglycoside Concentration (mg/mL) | Acceptable Diluents |
|----------------|--|--|--------------------------------------|-------------------------------------|
| Amikacin | 2.25 3.375 4.5 | 100 50 50 | 1.75 to 7.5 | 0.9% sodium chloride or 5% dextrose |
| Gentamicin | 2.25 3.375 4.5 | 50 50 100 | 0.7 to 3.32 | 0.9% sodium chloride or 5% dextrose |

^a Diluent volumes apply to single dose vials.
^b The concentrations ranges in Table 2 are based on administration of the aminoglycoside in divided doses (10 to 15 mg/kg/day in two daily doses for amikacin and 3 to 5 mg/kg/day in three daily doses for gentamicin). Administration of amikacin or gentamicin in a single daily dose or in doses exceeding those stated above via Y-site with piperacillin and tazobactam for injection has not been evaluated. See package insert for each aminoglycoside for complete Dosing and Administration instructions.

Only the concentration and diluents for amikacin or gentamicin with the dosage of piperacillin and tazobactam for injection listed above have been established as compatible for co-administration via Y-site infusion. Simultaneous co-administration via Y-site infusion in any manner other than listed above may result in inactivation of the aminoglycoside by piperacillin and tazobactam for injection.

Piperacillin and tazobactam for injection is not compatible with tobramycin for simultaneous co-administration via Y-site infusion. Compatibility of piperacillin and tazobactam for injection with other aminoglycosides has not been established.

Parenteral drug products should be inspected visually for particulate matter and discoloration prior to administration, whenever solution and container permit.

3 DOSAGE FORMS AND STRENGTHS

Piperacillin and tazobactam for injection, USP is supplied as a white to off-white powder in single dose vials in the following sizes: Each piperacillin and tazobactam for injection, USP 2.25 g single dose vial provides piperacillin sodium equivalent to 2 grams of piperacillin and tazobactam sodium equivalent to 0.25 g of tazobactam.

Each piperacillin and tazobactam for injection, USP 3.375 g single dose vial provides piperacillin sodium equivalent to 3 grams of piperacillin and tazobactam sodium equivalent to 0.375 g of tazobactam. Each piperacillin and tazobactam for injection, USP 4.5 g single dose vial provides piperacillin sodium equivalent to 4 grams of piperacillin and tazobactam sodium equivalent to 0.5 g of tazobactam.

Compatible Intravenous Solutions for Single Dose Vials
0.9% sodium chloride for injection
sterile water for injection[†]
Dextran 6% in saline
Dextrose 5%

† LACTATED RINGER'S SOLUTION IS NOT COMPATIBLE WITH PIPERACILLIN AND TAZOBACTAM FOR INJECTION.

[†] Maximum recommended volume per dose of sterile water for injection is 50 mL.

WARNINGS AND PRECAUTIONS

5.1 Hypersensitivity Adverse Reactions

Serious and occasionally fatal hypersensitivity (anaphylactic/anaphylactoid) reactions (including shock) have been reported in patients receiving therapy with piperacillin and tazobactam for injection. These reactions are more likely to occur in individuals with a history of penicillin, cephalosporin, or carbapenem hypersensitivity or a history of sensitivity to multiple allergens. Before initiating therapy with piperacillin and tazobactam for injection, careful inquiry should be made concerning previous hypersensitivity reactions. If an allergic reaction occurs, piperacillin and tazobactam for injection should be discontinued and appropriate therapy instituted.

5.2 Severe Cutaneous Adverse Reactions

Piperacillin and tazobactam for injection may cause severe cutaneous adverse reactions, such as Stevens-Johnson syndrome, toxic epidermal necrolysis, drug reaction with eosinophilia and systemic symptoms, and acute generalized exanthematous pustulosis. If patients develop a skin rash they should be monitored closely and piperacillin and tazobactam for injection discontinued if lesions progress.

5.3 Hematologic Adverse Reactions

Bleeding manifestations have occurred in some patients receiving β-lactam drugs, including piperacillin. These reactions have sometimes been associated with abnormalities of coagulation tests such as clotting time, platelet aggregation and prothrombin time, and are more likely to occur in patients with renal failure. If bleeding manifestations occur, piperacillin and tazobactam for injection should be discontinued and appropriate therapy instituted.

The leukopenia/neutropenia associated with piperacillin and tazobactam for injection administration appears to be reversible and most frequently associated with prolonged administration.

Periodic assessment of hematopoietic function should be performed, especially with prolonged therapy, i.e., ≥ 21 days [see *Adverse Reactions* (6.1)].

5.4 Central Nervous System Adverse Reactions

As with other penicillins, patients may experience neuromuscular excitability or convulsions if higher than recommended doses are given intravenously (particularly in the presence of renal failure).

5.5 Nephrotoxicity in Critically Ill Patients

The use of piperacillin and tazobactam for injection was found to be an independent risk factor for renal failure and was associated with delayed recovery of renal function as compared to other beta-lactam antibacterial drugs in a randomized, multicenter, controlled trial in critically ill patients [see *Adverse Reactions* (6.1)]. Based on this study, alternative treatment options should be considered in the critically ill population. If alternative treatment options are inadequate or unavailable, monitor renal function during treatment with piperacillin and tazobactam for injection [see *Dosage and Administration* (2.3)]. Combined use of piperacillin/tazobactam and vancomycin may be associated with an increased incidence of acute kidney injury [see *Drug Interactions* (7.3)].

5.6 Electrolyte Effects

Piperacillin and tazobactam for injection contains a total of 2.35 mEq (54 mg

7.4 Anticoagulants
Coagulation parameters should be tested more frequently and monitored regularly during simultaneous administration of high doses of heparin, oral anticoagulants, or other drugs that may affect the blood coagulation system or the thrombocyte function [see *Warnings and Precautions* (5.3)].

7.5 Vecuronium
Piperacillin when used concomitantly with vecuronium has been implicated in the prolongation of the neuromuscular blockade of vecuronium. Piperacillin and tazobactam for injection could produce the same phenomenon if given along with vecuronium. Due to their similar mechanism of action, it is expected that the neuromuscular blockade produced by any of the non-depolarizing muscle relaxants could be prolonged in the presence of piperacillin. Monitor for adverse reactions related to neuromuscular blockade (See package insert for vecuronium bromide).

7.6 Methotrexate
Limited data suggests that co-administration of methotrexate and piperacillin may reduce the clearance of methotrexate due to competition for renal secretion. The impact of tazobactam on the elimination of methotrexate has not been evaluated. If concurrent therapy is necessary, serum concentrations of methotrexate as well as the signs and symptoms of methotrexate toxicity should be frequently monitored.

7.7 Effects on Laboratory Tests
There have been reports of positive test results using the Bio-Rad Laboratories Platelia Aspergillus EIA test in patients receiving piperacillin/tazobactam injection who were subsequently found to be free of Aspergillus infection. Cross-reactions with non-Aspergillus polysaccharides and polyfuranses with the Bio-Rad Laboratories Platelia Aspergillus EIA test have been reported. Therefore, positive test results in patients receiving piperacillin/tazobactam should be interpreted cautiously and confirmed by other diagnostic methods.

As with other penicillins, the administration of piperacillin and tazobactam for injection may result in a false-positive reaction for glucose in the urine using a copper-reduction method (CLINITEST[®]; Siemens Healthcare Diagnostics Inc.). It is recommended that glucose tests based on enzymatic glucose oxidase reactions be used.

8 USE IN SPECIFIC POPULATIONS

8.1 Pregnancy Risk Summary
Piperacillin and tazobactam cross the placenta in humans. However, there are insufficient data with piperacillin and/or tazobactam in pregnant women to inform a drug-associated risk for major birth defects and miscarriage. No fetal structural abnormalities were observed in rats or mice when piperacillin/tazobactam was administered intravenously during organogenesis at doses 1 to 2 times and 2 to 3 times the human dose of piperacillin and tazobactam, respectively, based on body-surface area (mg/m²). However, fetotoxicity in the presence of maternal toxicity was observed in developmental toxicity and perinatal studies conducted in rats administered intravenously (particularly in the late gestation or from gestation day 17 through lactation day 21) at doses less than the maximum recommended human daily dose based on body-surface area (mg/m²) [see *Data*].

The background risk of major birth defects and miscarriage for the indicated population is unknown. In the U.S. general population, the estimated background risk of major birth defects and miscarriage in clinically recognized pregnancies is 2-4% and 15-20%, respectively.

Data
Animal Data
In embryo-fetal development studies in mice and rats, pregnant animals received intravenous doses of piperacillin/tazobactam up to 3,000/750 mg/kg/day during the period of organogenesis. There was no evidence of teratogenicity up to the highest dose evaluated, which is 1 to 2 times and 2 to 3 times the human dose of piperacillin and tazobactam, in mice and rats respectively, based on body-surface area (mg/m²). Fetal body weights were reduced in rats at maternally toxic doses at or above 500/62.5 mg/kg/day, minimally representing 0.4 times the human dose of both piperacillin and tazobactam based on body-surface area (mg/m²).

A fertility and general reproduction study in rats using intraperitoneal administration of tazobactam or the combination piperacillin/tazobactam prior to mating and through the end of gestation, reported a decrease in litter size in the presence of maternal toxicity at 640 mg/kg/day tazobactam (4 times the human dose of tazobactam based on body-surface area), and decreased litter size and an increase in fetuses with ossification delays and variations of ribs, concurrent with maternal toxicity at \approx 640/160 mg/kg/day piperacillin/tazobactam (0.5 times and 1 times the human dose of piperacillin and tazobactam, respectively, based on body-surface area).

Peri/postnatal development in rats was impaired with reduced pup weights, increased stillbirths, and increased pup mortality concurrent with maternal toxicity after intraperitoneal administration of tazobactam alone at doses \geq 320 mg/kg/day (2 times the human dose based on body surface area) or of the combination piperacillin/tazobactam at doses \geq 640/160 mg/kg/day (0.5 times and 1 times the human dose of piperacillin and tazobactam, respectively, based on body-surface area) from gestation day 17 through lactation day 21.

8.2 Lactation Risk Summary
Piperacillin is excreted in human milk; tazobactam concentrations in human milk have not been studied. No information is available on the effects of piperacillin and tazobactam on the breastfed child or on milk production. The developmental and health benefits of breastfeeding should be considered along with the mother's clinical need for piperacillin and tazobactam for injection and any potential adverse effects on the breastfed child from piperacillin and tazobactam for injection or from the underlying maternal condition.

8.4 Pediatric Use
Piperacillin and tazobactam for injection in pediatric patients 2 months of age or older with appendicitis and/or peritonitis is supported by evidence from well-controlled studies and pharmacokinetic studies in adults and in pediatric patients. This includes a prospective, randomized, comparative, open-label clinical trial with 542 pediatric patients 2 to 12 years of age with complicated intra-abdominal infections, in which 373 pediatric patients received piperacillin/tazobactam. Safety and efficacy in pediatric patients less than 2 months of age have not been established [see *Clinical Pharmacology* (12) and *Dosage and Administration* (2)].

It has not been determined how to adjust piperacillin and tazobactam for injection dosage in pediatric patients with renal impairment.

8.5 Geriatric Use
Patients over 65 years are not at an increased risk of developing adverse effects solely because of age. However, dosage should be adjusted in the presence of renal impairment [see *Dosage and Administration* (2)].

In general, dose selection for an elderly patient should be cautious, usually starting at the low end of the dosing range, reflecting the greater frequency of decreased hepatic, renal, or cardiac function, and of concomitant disease or other drug therapy.

Piperacillin and tazobactam for injection contains 54 mg (2.35 mEq) of sodium per gram of piperacillin in the combination product. At the usual recommended doses, patients would receive between 648 and 864 mg/day (28.2 and 37.6 mEq) of sodium. The geriatric population may respond with a blunted natriuresis to salt loading. This may be clinically important with regard to such diseases as congestive heart failure.

This drug is known to be substantially excreted by the kidney, and the risk of toxic reactions to this drug may be greater in patients with impaired renal function. Because elderly patients are more likely to have decreased renal function, care should be taken in dose selection, and it may be useful to monitor renal function.

8.6 Renal Impairment
In patients with creatinine clearance \leq 40 mL/min and dialysis patients (hemodialysis and CAPD), the intravenous dose of piperacillin and tazobactam for injection should be reduced to the degree of renal function impairment [see *Dosage and Administration* (2)].

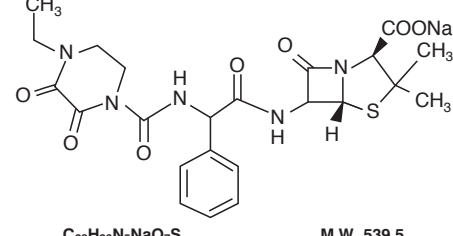
8.7 Hepatic Impairment
Dosage adjustment of piperacillin and tazobactam for injection is not warranted in patients with hepatic cirrhosis [see *Clinical Pharmacology* (12.3)].

8.8 Patients with Cystic Fibrosis
As with other semisynthetic penicillins, piperacillin therapy has been associated with an increased incidence of fever and rash in cystic fibrosis patients.

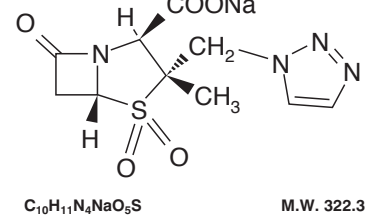
10 OVERDOSAGE
There have been post-marketing reports of overdose with piperacillin/tazobactam. The majority of those events experienced, including nausea, vomiting, and diarrhea, have also been reported with the usual recommended dosages. Patients may experience neuromuscular excitability or convulsions if higher than recommended doses are given intravenously (particularly in the presence of renal failure) [see *Warnings and Precautions* (5.4)].

Treatment should be supportive and symptomatic according to the patient's clinical presentation. Excessive serum concentrations of either piperacillin or tazobactam may be reduced by hemodialysis. Following a single 3.375 g dose of piperacillin/tazobactam, the percentage of the piperacillin and tazobactam dose removed by hemodialysis was approximately 31% and 39%, respectively [see *Clinical Pharmacology* (12)].

11 DESCRIPTION
Piperacillin and tazobactam for injection, USP is an injectable antibacterial combination product consisting of the semisynthetic antibacterial piperacillin sodium and the β -lactamase inhibitor tazobactam sodium for intravenous administration. Piperacillin sodium is derived from D(-)- α -aminobenzyl-penicillin. The chemical name of piperacillin sodium is sodium (2S,5R,6R)-6-[(R)-2-(4-ethyl-2,3-dioxo-1-piperazine-carboxamido)-2-phenylacetamido]-3,3-dimethyl-7-oxo-4-thia-1-azabicyclo[3.2.0]heptane-2-carboxylate. The structure of piperacillin sodium is:



Tazobactam sodium, a derivative of the penicillin nucleus, is a penicillanic acid sulfone. Its chemical name is sodium (2S,3S,5R)-3-methyl-7-oxo-3-(1H-1,2,3-triazol-1-ylmethyl)-4-thia-1-azabicyclo[3.2.0]heptane-2-carboxylate-4,4-dioxide. The structure of tazobactam sodium is:



Piperacillin and tazobactam for injection, USP is a white to off-white sterile, cryodesiccated powder consisting of piperacillin and tazobactam as their sodium salts packaged in glass vials.

The product does not contain excipients or preservatives.

Each Piperacillin and Tazobactam for Injection 2.25 g single dose vial contains an amount of drug sufficient for withdrawal of piperacillin sodium equivalent to 2 grams of piperacillin and tazobactam sodium equivalent to 0.25 g of tazobactam.

Each Piperacillin and Tazobactam for Injection 3.375 g single dose vial contains an amount of drug sufficient for withdrawal of piperacillin sodium equivalent to 3 grams of piperacillin and tazobactam sodium equivalent to 0.375 g of tazobactam.

Each Piperacillin and Tazobactam for Injection 4.5 g single dose vial contains an amount of drug sufficient for withdrawal of piperacillin sodium equivalent to 4 grams of piperacillin and tazobactam sodium equivalent to 0.5 g of tazobactam.

Piperacillin and tazobactam for injection, USP contains a total of 2.35 mEq (54 mg) of sodium (Na⁺) per gram of piperacillin in the combination product.

Meets USP Organic Impurities, Procedure 1.

12 CLINICAL PHARMACOLOGY

12.1 Mechanism of Action
Piperacillin and tazobactam for injection is an antibacterial drug [see *Microbiology* (12.4)].

12.2 Pharmacodynamics
The pharmacodynamic parameter for piperacillin/tazobactam that is most predictive of clinical and microbiological efficacy is time above MIC.

12.3 Pharmacokinetics
The mean and coefficients of variation (CV%) for the pharmacokinetic parameters of piperacillin and tazobactam after multiple intravenous doses are summarized in Table 6.

| Piperacillin | | Tazobactam | | | | |
|--|----------------------------|------------------------------|--------------|--------|--------------------|---------------------------|
| Piperacillin/ Tazobactam Dose ^a | C _{max} mcg/mL | AUC ^b mcg•h/mL | CL mL/min | V L | T _{1/2} h | CL _R mL/min |
| 2.25 g | 134 | 131 (14) | 257 | 17.4 | 0.79 | -- |
| 3.375 g | 242 | 242 (10) | 207 | 15.1 | 0.84 | 140 |
| 4.5 g | 298 | 322 (16) | 210 | 15.4 | 0.84 | -- |

| Piperacillin/ Tazobactam Dose ^a | C _{max} mcg/mL | AUC ^b mcg•h/mL | CL mL/min | V L | T _{1/2} h | CL _R mL/min |
|--|----------------------------|------------------------------|--------------|--------|--------------------|---------------------------|
| 2.25 g | 15 | 16.0 (21) | 258 | 17.0 | 0.77 | -- |
| 3.375 g | 24 | 25.0 (8) | 251 | 14.8 | 0.88 | 166 |
| 4.5 g | 34 | 39.8 (15) | 206 | 14.7 | 0.82 | -- |

^a Piperacillin and tazobactam were given in combination, infused over 30 minutes.

^b Numbers in parentheses are coefficients of variation (CV%).

Peak plasma concentrations of piperacillin and tazobactam are attained immediately after completion of an intravenous infusion of piperacillin and tazobactam for injection. Piperacillin plasma concentrations, following a 30-minute infusion of piperacillin and tazobactam for injection were similar to those attained when equivalent doses of piperacillin were administered alone. Steady-state plasma concentrations of piperacillin and tazobactam were similar to those attained after the first dose due to the short half-lives of piperacillin and tazobactam.

Distribution
Both piperacillin and tazobactam are approximately 30% bound to plasma proteins. The protein binding of either piperacillin or tazobactam is unaffected by the presence of the other compound. Protein binding of the tazobactam metabolite is negligible.

Piperacillin and tazobactam are widely distributed into tissues and body fluids including intestinal mucosa, gallbladder, lung, female reproductive tissues (uterus, ovary, and fallopian tube), interstitial fluid, and bile. Mean tissue concentrations are generally 50% to 100% of those in plasma. Distribution of piperacillin and tazobactam into cerebrospinal fluid is low in subjects with non-inflamed meninges, as with other penicillins (see Table 7).

| Tissue or Fluid | N ^a | Sampling period ^b (h) | Mean PIP Concentration Range (mg/L) | Tazo Concentration Range (mg/L) | Tazo Tissue: Plasma | |
|----------------------------|----------------|----------------------------------|-------------------------------------|---------------------------------|---------------------|--------------|
| Skin | 35 | 0.5 to 4.5 | 34.8 to 94.2 | 0.60 to 1.1 | 4.0 to 7.7 | 0.49 to 0.93 |
| Fatty Tissue | 37 | 0.5 to 4.5 | 4.0 to 10.1 | 0.097 to 0.115 | 0.7 to 1.5 | 0.10 to 0.13 |
| Muscle | 36 | 0.5 to 4.5 | 9.4 to 23.3 | 0.29 to 0.18 | 1.4 to 2.7 | 0.18 to 0.30 |
| Proximal Intestinal Mucosa | 7 | 1.5 to 2.5 | 31.4 | 0.55 | 10.3 | 1.15 |
| Distal Intestinal Mucosa | 7 | 1.5 to 2.5 | 31.2 | 0.59 | 14.5 | 2.1 |
| Appendix | 22 | 0.5 to 2.5 | 26.5 to 64.1 | 0.43 to 0.53 | 9.1 to 18.6 | 0.80 to 1.35 |

^a Each subject provided a single sample.

^b Time from the start of the infusion.

Metabolism

Piperacillin is metabolized to a minor microbiologically active desethyl metabolite. Tazobactam is metabolized to a single metabolite that lacks pharmacological and antibacterial activities.

Excretion
Following single or multiple piperacillin and tazobactam for injection doses to healthy patients, the plasma half-life of piperacillin and of tazobactam ranged from 0.7 to 1.2 hours and was unaffected by dose or duration of infusion.

Both piperacillin and tazobactam are eliminated via the kidney by glomerular filtration and tubular secretion. Piperacillin is excreted rapidly as unchanged drug with 68% of the administered dose excreted in the urine. Tazobactam and its metabolite are eliminated primarily by renal excretion with 80% of the administered dose excreted as unchanged drug and the remainder as the single metabolite. Piperacillin, tazobactam and desethyl piperacillin are also secreted into the bile.

Specific Populations

Renal Impairment
After the administration of single doses of piperacillin/tazobactam to subjects with renal impairment, the half-life of piperacillin and of tazobactam increases with decreasing creatinine clearance. At creatinine clearance below 20 mL/min, the increase in half-life is twofold for piperacillin and fourfold for tazobactam compared to subjects with normal renal function. Dosage adjustments for piperacillin and tazobactam for injection are recommended when creatinine clearance is below 40 mL/min in patients receiving the usual recommended daily dose of piperacillin and tazobactam for injection. See *Dosage and Administration* (2) for specific recommendations for the treatment of patients with renal impairment.

Hemodialysis removes 30% to 40% of a piperacillin/tazobactam dose with an additional 5% of the tazobactam dose removed as the tazobactam metabolite. Peritoneal dialysis removes approximately 6% and 21% of the piperacillin and tazobactam doses, respectively, with up to 16% of the tazobactam dose removed as the tazobactam metabolite. For dosage recommendations for patients undergoing hemodialysis [see *Dosage and Administration* (2)].

Hepatic Impairment
The half-life of piperacillin and of tazobactam increases by approximately 25% and 18%, respectively, in patients with hepatic cirrhosis compared to healthy subjects. However, this difference does not warrant dosage adjustment of piperacillin and tazobactam for injection due to hepatic cirrhosis.

Pediatrics
Piperacillin and tazobactam pharmacokinetics were studied in pediatric patients 2 months of age and older. The clearance of both compounds is slower in the younger patients compared to older children and adults.

In a population PK analysis, estimated clearance for 9 month-old to 12 year-old patients was comparable to adults, with a population mean (SE) value of 5.64 (0.34) mL/min/kg. The piperacillin clearance estimates had a 90% CI value for pediatric patients 2 to 9 months old. In patients younger than 2 months of age, clearance of piperacillin is slower compared to older children; however, it is not adequately characterized for dosing recommendations. The population mean (SE) for piperacillin distribution volume is 0.243 (0.011) L/kg and is independent of age.

Geriatrics
The impact of age on the pharmacokinetics of piperacillin and tazobactam was evaluated in healthy male subjects, aged 18 to 35 years (n=6) and aged 65 to 80 years (n=12). Mean half-life for piperacillin and tazobactam was 32% and 55% higher, respectively, in the elderly compared to the younger subjects. This difference may be due to age-related changes in creatinine clearance.

Race
The effect of race on piperacillin and tazobactam was evaluated in healthy male volunteers. No difference in piperacillin or tazobactam pharmacokinetics was observed between Asian (n=9) and Caucasian (n=9) healthy volunteers who received single 4/0.5 g doses.

Drug Interactions
The potential for pharmacokinetic drug interactions between piperacillin and tazobactam for injection and aminoglycosides, probenecid, vancomycin, heparin, vecuronium, and methotrexate has been evaluated [see *Drug Interactions* (7)].

12.4 Microbiology Mechanism of Action

Piperacillin sodium exerts bactericidal activity by inhibiting septum formation and cell wall synthesis of susceptible bacteria. *In vitro*, piperacillin is active against a variety of Gram-positive and Gram-negative aerobic and anaerobic bacteria. Tazobactam sodium has little clinically relevant *in vitro* activity against bacteria due to its reduced affinity to penicillin-binding proteins. It is, however, a β -lactamase inhibitor of the Molecular class A enzymes, including Richmond-Sykes class III (Bush class 2b & 2c) penicillinases and cephalosporinases. It varies in its ability to inhibit class II and IV (2a & 4) penicillinases. Tazobactam does not induce chromosomally-mediated β -lactamases at tazobactam concentrations achieved with the recommended dosage regimen.

Spectrum of Activity
Piperacillin/tazobactam has been shown to be active against most isolates of the following microorganisms both *in vitro* and in clinical infections [see *Indications and Usage* (1)].

Gram-positive bacteria:
Staphylococcus aureus (methicillin susceptible isolates only)

Gram-negative bacteria:
Acinetobacter baumannii
Escherichia coli
Haemophilus influenzae (excluding β -lactamase negative, ampicillin-resistant isolates)

Klebsiella pneumoniae
Pseudomonas aeruginosa (given in combination with an aminoglycoside to which the isolate is susceptible)

Anaerobic bacteria:
Bacteroides fragilis group (*B. fragilis*, *B. ovatus*, *B. thetaiotaomicron*, and *B. vulgatus*)

The following *in vitro* data are available, but their clinical significance is unknown.

At least 90% of the following microorganisms exhibit an *in vitro* minimum inhibitory concentration (MIC) less than or equal to the susceptible breakpoint for piperacillin/tazobactam. However, the safety and effectiveness of piperacillin/tazobactam in treating clinical infections due to these bacteria have not been established in adequate and well-controlled clinical trials.

Gram-positive bacteria:
Enterococcus faecalis (ampicillin or penicillin-susceptible isolates only)
Staphylococcus epidermidis (methicillin susceptible isolates only)
Streptococcus agalactiae[†]
Streptococcus pneumoniae[†] (penicillin-susceptible isolates only)
Streptococcus pyogenes[†]
Viridans group streptococci[†]

Gram-negative bacteria:
Citrobacter koseri
Moraxella catarrhalis
Morganella morganii
Neisseria gonorrhoeae
Proteus mirabilis
Proteus vulgaris
Serratia marcescens
Providencia stuartii
Providencia rettgeri
Salmonella enterica

Anaerobic bacteria:
Clostridium perfringens
Bacteroides distans
Prevotella melanogenica

[†] These are not β -lactamase producing bacteria and, therefore, are susceptible to piperacillin alone.

Susceptibility Testing Methods
For specific information regarding susceptibility test interpretive criteria and associated test methods and quality control standards recognized by FDA for this drug, please see: <https://www.fda.gov/STIC>.

13 NONCLINICAL TOXICOLOGY

13.1 Carcinogenesis, Mutagenesis, Impairment of Fertility
Long-term carcinogenicity studies in animals have not been conducted with piperacillin/tazobactam, piperacillin, or tazobactam.

Piperacillin/Tazobactam
Piperacillin/tazobactam was negative in microbial mutagenicity assays, the unscheduled DNA synthesis (UDS) test, a mammalian point mutation (Chinese hamster ovary cell HPRT) assay, and a mammalian cell (BALB/c-3T3) transduction assay. *In vivo*, piperacillin/tazobactam did not induce chromosomal aberrations in rats.

Piperacillin/Tazobactam
Reproduction studies have been performed in rats and have revealed no evidence of impaired fertility when piperacillin/tazobactam is administered intravenously up to a dose of 1,280/320 mg/kg piperacillin/tazobactam, which is similar to the maximum recommended human daily dose based on body-surface area (mg/m²).

15 REFERENCES
1. Jensen J-US, Hein L, Lundgren B, et al. *BMJ Open* 2012; 2:e000635. doi:10.1136.

16 HOW SUPPLIED/STORAGE AND HANDLING
Piperacillin and tazobactam for injection, USP are supplied as single-dose vials in the following sizes:

- Each piperacillin and tazobactam for injection 2.25 g vial provides piperacillin sodium equivalent to 2 grams of piperacillin and tazobactam sodium equivalent to 0.25 g of tazobactam. Each vial contains 4.7 mEq (108 mg) of sodium. Supplied 10 per carton - NDC 63323-981-21
- Each piperacillin and tazobactam for injection 3.375 g vial provides piperacillin sodium equivalent to 3 grams of piperacillin and tazobactam sodium equivalent to 0.375 g of tazobactam. Each vial contains 7.05 mEq (162 mg) of sodium. Supplied 10 per carton - NDC 63323-982-21
- Each piperacillin and tazobactam for injection 4.5 g vial provides piperacillin sodium equivalent to 4 grams of piperacillin and tazobactam sodium equivalent to 0.5 g of tazobactam. Each vial contains 9.4 mEq (216 mg) of sodium. Supplied 10 per carton - NDC 63323-982-52

Piperacillin and tazobactam for injection, USP single-dose vials should be stored at 20° to 25°C (68° to 77°F) [see USP Controlled Room Temperature] prior to reconstitution.

The container closure is not made with natural rubber latex.

17 PATIENT COUNSELING INFORMATION

Serious Hypersensitivity Reactions
Advise patients, their families, or caregivers that serious hypersensitivity reactions, including serious allergic cutaneous reactions, could occur that require immediate treatment. Ask them about any previous hypersensitivity reactions to piperacillin and tazobactam for injection, other beta-lactams (including cephalosporins), or other allergens [see *Warnings and Precautions* (5.2)].

Diarrhea
Advise patients, their families, or caregivers that diarrhea is a common problem caused by antibacterial drugs which usually ends when the drug is discontinued. Sometimes after starting treatment with antibacterial drugs, patients can develop watery and bloody stools (with

or without stomach cramps and fever) even as late as two or more months after having taken the last dose of the drug. If this occurs, patients should contact their physician as soon as possible.

Antibacterial Resistance
Counsel patients that antibacterial drugs including piperacillin and tazobactam for injection should only be used to treat bacterial infections. They do not treat viral infections (e.g., the common cold). When piperacillin and tazobactam for injection is prescribed to treat a bacterial infection, patients should be told that although it is common to feel better early in the course of therapy, the medication should be taken exactly as directed. Skipping doses or not completing the full course of therapy may (1) decrease the effectiveness of the immediate treatment and (2) increase the likelihood that bacteria will develop resistance and will not be treatable by piperacillin and tazobactam for injection or other antibacterial drugs in the future.

Counsel patients that piperacillin and tazobactam for injection can cross the placenta in humans and is excreted in human milk. The brand names mentioned in this document are the trademarks of their respective owners.

Manufactured by:
FRESENIUS KABI
Lake Zurich, IL 60047
Made in Italy
www.fresenius-kabi.com/us
451269D
Revised: June 2018